



Bienvenidos!

Presentation by:
Dr. Vanita Misquita Ph.D.
Director of Overseas Programs
europe@iit.edu

Illinois Institute of Technology is located in Chicago, Illinois



Chicago: the City Illinois Tech Built

- 3rd largest city in the U.S.
- 35 miles of lakefront
- 552 parks
- 46 museums
- 7,000 restaurants
- #1 in the U.S. in manufacturing
- #1 in the U.S. in nanotechnology

ILLINOIS TECH

Discover. Create. Solve.



Autumn in Chicago



Winter in Chicago



Spring & Summer in Chicago



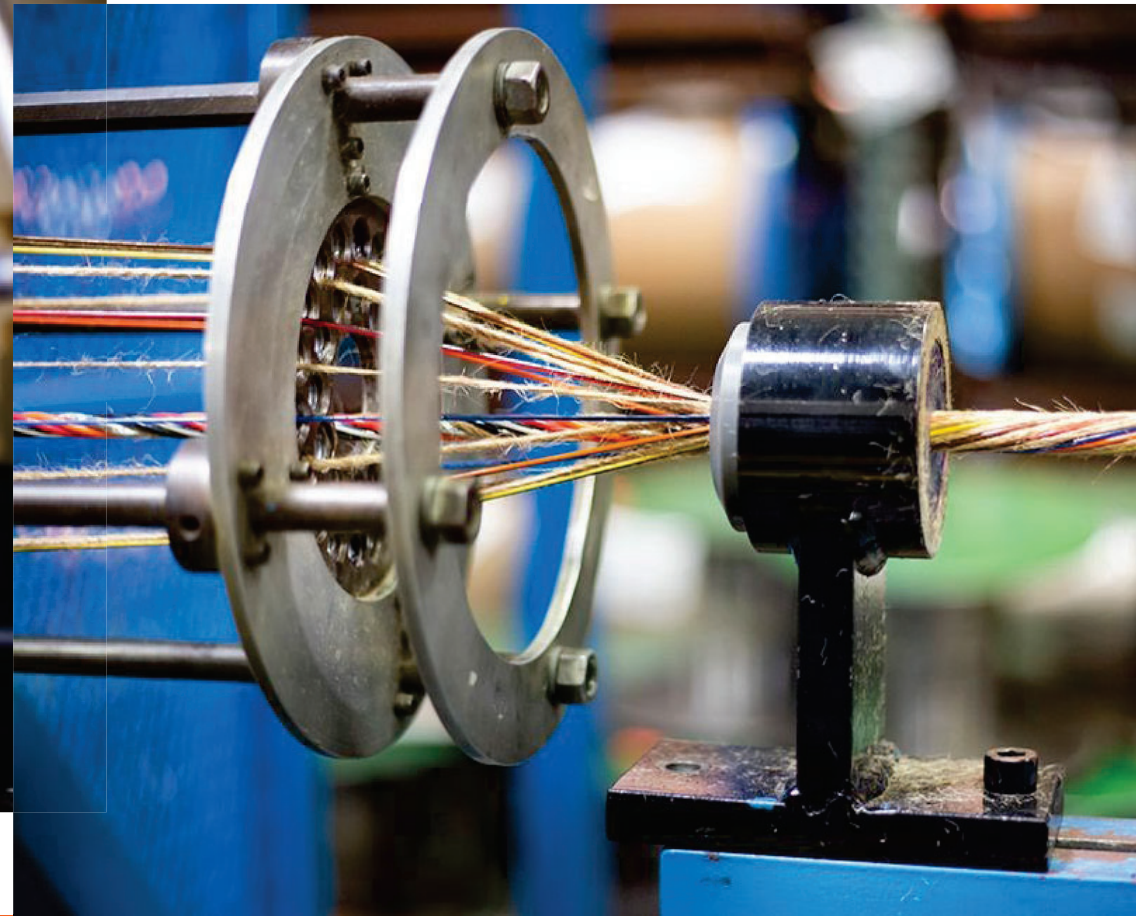
Academics

Eight colleges with 40+ programs

- Armour College of Engineering
- Chicago-Kent College of Law
- College of Architecture
- College of Computing
- Institute of Design
- Lewis College of Science and Letters
- Stuart School of Business

Four institutes

- Ed Kaplan Family Institute for Innovation and Tech Entrepreneurship
- Institute for Food Safety and Health
- Pritzker Institute of Biomedical Science and Engineering
- Wanger Institute for Sustainable Energy Research (WISER)



What is a U.S. credit hour?

- 1 U.S. credit hour equals 1 contact hour of lecture
- A graduate level course at Illinois Tech is usually 3 credit hours
- A 3-credit hour course at Illinois Tech means that the course may be offered three times per week or once a week for 3 hours
- 1 U.S. Credit = ~2 ECTS credits

Why study at Illinois Tech?

- Illinois Tech is the **only tech focused university** in Chicago
- **Chicago** is the 3rd largest city in the U.S, opportunities for networking and jobs aplenty – home to more than 30 Fortune 500 companies
- **Argonne National Laboratory and Fermilab** – world famous laboratories – are located within an hour of Illinois Tech
- Possible to complete a Master's degree in **1 year (12 months)** at IIT in **ANY FIELD WITH APPROVAL FROM HOME INSTITUTION**
- **Tuition is the same** for all students regardless of field of study **Engineering/Tech/Science/Business**
- **No quotas** at the Master's degree level – **Illinois Tech Partner Alliance scholarship for UPM –12 credits for the 1 –year Master**
- **F1 visa** allows students to work for 1 year in the U.S. in their field of study or 3 years if the program has been designated as STEM



Why study at Illinois Tech?

- Member of the Association of Independent Technological Universities
- AITU consists of 23 colleges and universities
- Illinois Tech among the first 15 founding members 1957
- Other members include: California Institute of Technology (CalTech), Carnegie Mellon University (CMU) and Massachusetts Institute of Technology (MIT)



CUTTING EDGE AREAS OF STUDY AND CAREER OPPORTUNITIES

ILLINOIS TECH

CUTTING-EDGE FIELDS OF STUDY & CAREER OPPORTUNITIES

FIELDS OF STUDY

M.S. Autonomous Systems & Robotics

M.Eng Cybersecurity Engineering

M.Eng Computer Engineering & IoT

M.Eng Biomedical Engineering

M.S. Computational Decision Sc & Op

CAREER OPPORTUNITIES

EXAMPLES

Robotics Engineer/Autonomous

Systems engineer/Navigation &

Guidance systems engineer

Cybersecurity Systems Engineer/

Network Security Engineer

Chief IoT officer

Orthopedic bioengineer/Rehab

engineer/quality engineer

Logistician/Operations/market

research analyst



IN THE NEWS

ILLINOIS TECH

IN THE NEWS

Award-winning student's(**Larissa AFFOLABI (ESIGELEC-IIT –Master 2019, Phd current)** research innovates electric-vehicle charging
<https://www.iit.edu/news/award-winning-student-research-innovates-electric-vehicle-charging>

New chair - Calvin Nobles of Illinois Institute of Technology's Department of Information Technology and Management, has been awarded a non-resident fellowship with the **Cyber Project** at the Belfer Center for Science and International Affairs at Harvard University's Kennedy School. The aim of the Belfer Center's Cyber Project is to become the premier home for the rigorous and policy-relevant cybersecurity-related responses to contemporary issues.

4th year Architecture student's winning design to be built in Kenya

Illinois Tech launches 5 new Chemistry programs –Medicinal chemistry, Bioanalytical chemistry, environmental chemistry, forensic chemistry & computational chemistry
<https://cen.acs.org/articles/95/i42/Illinois-Tech-launches-5-new.html>

FEEDBACK FROM A UPM
STUDENT CURRENTLY AT
ILLINOIS TECH

ILLINOIS TECH

Eduardo OSSORIO – Master Applied Physics at IIT

What were your reasons for choosing Illinois Tech?

“Meet the American culture and trying to get a job here at some point”

What is your impression about the quality of teaching and content at Illinois Tech?

“Teachers are better than the ones I am used to have”

What is your impression of Chicago?

“It’s great, there is always something new to do (although a bit expensive)”

How are you managing with courses in English?

“English is not being a problem at all in understanding my courses”

What would you like to have known before coming to Illinois Tech that you would want to share with UPM students interested in studying at Illinois Tech?

“Can’t think of anything that surprised me too much”

STATS

ILLINOIS TECH

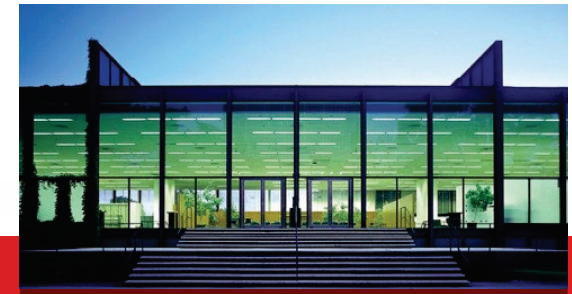
Fall 2020 Quick Facts

- Undergraduates: 3,121 students: first-year student body comes from 22 countries and 33 states in the U.S.
- Graduates: 3,204 students: 53 countries are represented in the graduate student body



Rankings and Recognition

- **#5** in the Nation for Finance – *The Financial Times* on Stuart School of Business
- **#1** in the Nation for Intellectual Property Law – *Law Street* on Chicago-Kent College of Law
- **Top 25** STEM Colleges 2018 – *Forbes*



S. R. Crown Hall

Designated a national historic
landmark by the united states
secretary of the interior

NOTABLE ALUMNI

ILLINOIS TECH

Martin Cooper

- Graduated Illinois Tech with a bachelor's and master's degree in **electrical engineering**
- **Inventor** of the cell phone 1972-73
- Formulated the **Law of Spectral Efficiency**, also known as Cooper's Law.
- Awarded the prestigious **Charles Stark Draper Prize** in 2013 amongst many others



"The fundamentals I learned at Illinois Tech have been my guiding light in everything I have done."

— Martin Cooper
(B.S. EE 1950; M.S. EE 1957)

Rohit Prasad

- Graduated from Illinois Tech with a master's degree in **electrical engineering**
- **Head Scientist** behind Amazon's Alexa
- Currently **Vice President** and Head Scientist, Alexa Artificial Intelligence (AI)
- Ranked No. **9** in Fast Company's 100 most creative people in business, 2017
- **15** on Recode's list of 100 people in tech, business and media ,2017

amazon echo

Always ready, connected, and fast. Just ask.



"The way I think about Alexa is the way AI is revolutionizing daily convenience."

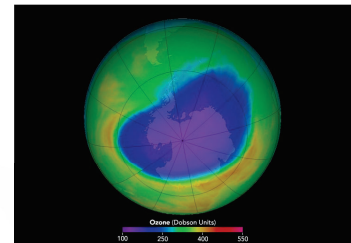
– Rohit Prasad
(M.S. EE 1999)



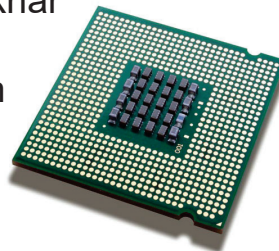
Ed Kaplan
(ME 1965)
Pioneer in Barcode
Technology



Susan Solomon
(Chem 1977)
Discovered Manmade
Chlorofluorocarbons were
Destroying the Earth



Rajeev Chandrashekhkar
(M.S. CS 1988)
Member of the Team
that Developed the
Pentium Chip



Victor Tsao
(M.S. CS 1980)
Co-founder of Linksys





Andrea Berry (CS 1984)
Emmy Award-winning
Broadcast Media
Consultant



Anita Burke (ME 1990)
Vehicle Chief Engineer
for the GMC Canyon
and Chevrolet
Colorado



Gloria Ray Karlmark
(Chem. Math 1965)
Part of The Little Rock
Nine who Stood Up
Against Segregation in
Arkansas Schools

CAMPUS LIFE

ILLINOIS TECH

Campus Housing

Residence Halls

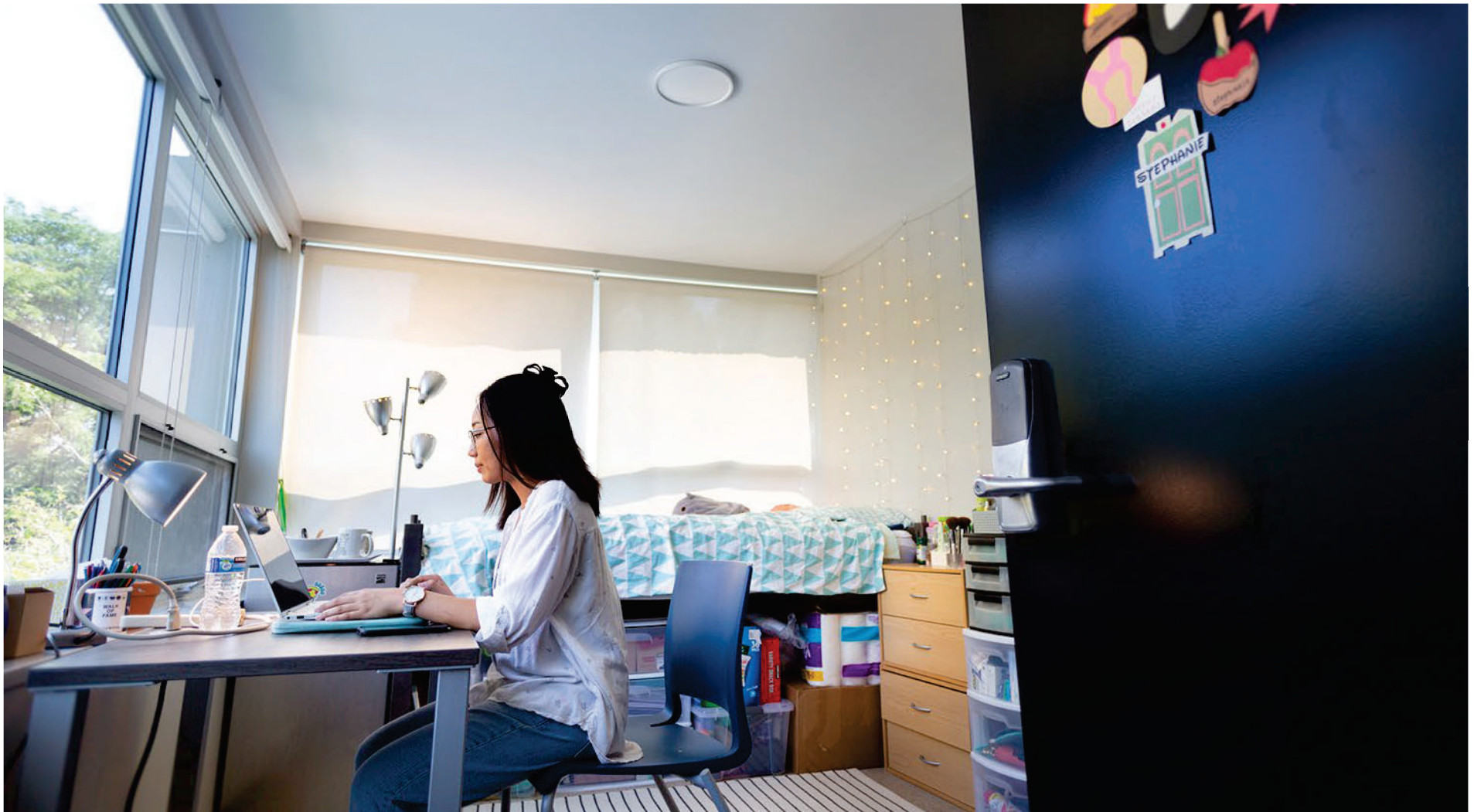
- [McCormick Student Village](#)
- [Jeanne and John Rowe Village](#)
- [Gunsaulus Hall](#)
- [Carman Hall](#)
- [George J. Kacek Hall](#)



To learn more about residence halls visit <https://www.iit.edu/student-experience/campus-and-housing/residence-halls>







ROOM RATES ON CAMPUS: August 2021-May 2022

<https://web.iit.edu/housing/rates-contract-terms#RoomRate>

Cost range: \$8,388-\$15,000 for the academic year

BOARD/MEAL RATES ON CAMPUS:

<https://web.iit.edu/housing/options-and-rates>

Cost range: \$1,744 - \$7,204 for the academic year

Athletics: Scarlet Hawks

Men's

Baseball
Basketball
Cross Country
Lacrosse
Soccer
Swimming and Diving
Tennis
Track and Field
Volleyball

Women's

Basketball
Cross Country
Lacrosse
Soccer
Swimming and Diving
Tennis
Track and Field
Volleyball



Illinois Tech Student Center





ILLINOIS TECH PARTNERS IN SPAIN

ILLINOIS TECH

Illinois Tech Partners in Spain

- Universidad Politecnica de Madrid
(UPM – ETSIT, ETSII, ETSIAAB, ETSIAE, ETSICCP, ETSIINF, ETSAM & ETSIDI)
- Universitat Politecnica de Catalunya
(UPC – ETSETB, ETSEIB, ETSAB, ETSECCPB, ESEEIAT, FME)
- Universitat Politecnica de Valencia
(UPV – ETSA, ETSII, ETSIT, ETSICCP & ETSIAMN)
- Universidad de Seville
- ICAI-Universidad Pontificia Comillas, Madrid
- ESIB –Universidad del Pais Vasco (UPV)

Departments at Illinois Tech for UPM

Armour College of Engineering

Department of Electrical & Computer Engineering

www.iit.edu/ece

Department of Mechanical, Materials & Aerospace Engineering

www.iit.edu/mmae

Department of Civil, Architectural & Environmental Engineering

www.iit.edu/caee

Department of Chemical & Biological Engineering

www.iit.edu/chbe

Department of Biomedical Engineering

www.iit.edu/bme

College of Computing

Department of Information Technology & Management

www.iit.edu/itm

Department of Industrial Technology & Operations

www.iit.edu/intm

Department of Computer Science

www.iit.edu/computer-science

Department of Applied Mathematics www.iit.edu/applied-math

Lewis College of Science & Letters

Department of Food Science & Nutrition www.iit.edu/fdsn

Department of Physics www.iit.edu/physics

Department of Biology www.iit.edu/biology

Stuart School of Business – www.iit.edu/stuart

INTERDISCIPLINARY PROGRAMS @ ILLINOIS TECH

Armour College of Engineering

M.Eng – Computational Engineering – Biomedicine Track (BME dept.)

M.Eng – Computational Mechanics – (MMAE dept)

M.Eng – Computational Engineering – Optimization Machine Visitino& Decision-Making track (ECE dept)

M.Eng – Energy Systems, Energy Transmission & Markets track (ECE dept)

M.Eng – Engineering Management – Product Design & Development Track (MMAE Dept)

M.Eng – Advanced Manufacturing – Additive& Digital Manufacturing Tracks (MMAE dept)

M.Eng – Advanced Manufacturing – Automation & Control Systems track (ECE dept)

Career Opportunities & quick google search of average annual salaries in the U.S. per job title

Computational Fluid Dynamics Analyst – 94K

Core Algorithm developer – 88K

Senior Machine Learning optimization engineer – 100K

Computer Vision Software developer – 83K

Energy Efficiency specialist – 66K

Transmission Engineer – 100K

Transmission and Distribution line engineer -97K

New Product Development Engineer – 100K

Product Engineering designer – 95K

Advanced Manufacturer Engineer – 81K

Image Processing Engineer – 100K

Automation Control Systems Engineer – 85K

Senior Automation controls Engineer – 99K

Systems Energy Engineer – 100K

Senior Energy Engineer – 93K

A FEW EXAMPLES OF NEW* & JOB MARKET-RELEVANT MASTER DEGREE PROGRAMS @ ILLINOIS TECH

***M.S. Autonomous Systems & Robotics (MMAE)**

M.S. Computational Decision Science & Operations Research (CS)

Master of Electricity Markets (ECE)

Master of Cybersecurity Engineering (ECE)

Master of Power Engineering (ECE)

M.Eng Wireless Communication & Computer Networks (ECE)

M.A.S. Artificial Intelligence (CS)

M.S. Computational Decision Science & Operations Research (CS)

M.A.S. Data Science (CS)

M.A.S. Cybersecurity (CS)

***M.S. Biomedical Data Science & Modeling (BME)**

***M.S. Medical Devices & Biomaterials (BME)**

M.Eng Environmental Engineering (CAEE)

M.S. Environmental Management & Sustainability (SSB)

M.S. Marketing Analytics (SSB)

M.A.S. Technological Entrepreneurship (SSB)

M.P.P.A. – Master of Public Policy & Administration (SSB)

RESEARCH AREAS AT THE IIT MMAE DEPARTMENT

- Autonomous Systems
- Design & Manufacturing
- Energy Storage & Conversion
- Fluid Dynamics
- Materials Science & Engineering
- Solids & Structures
- Thermal Sciences

A FEW EXAMPLES OF JOB OPPORTUNITIES & A QUICK GOOGLE SEARCH OF ANNUAL AVERAGE SALARIES IN THE U.S., BASED ON FIELDS OF STUDY OFFERED BY IIT'S DEPARTMENTS

Advanced Manufacturer Engineer	Average annual salary - \$81K
New Product Development Engineering	\$80K
Product Engineering Designer	\$95K
Control Systems Engineer	\$100K
Autonomous Systems Engineer	\$104K
Chief IoT officer	\$288K
Robotics Systems engineer	\$95K
Navigation & Guidance systems engineer	\$126K
AI Engineer	\$164K
Senior Energy Engineer	\$105K
Systems Energy Engineer	\$104K
Energy Program manager	\$90K
Product Development Manager	\$124K
Senior Product Manager	\$146
Structural Systems Engineer	\$95K
AI & Machine Learning Developer	\$143K
Process Engineer	\$74K
Quality engineer	\$77K
Materials Science Engineer	\$78K
Construction Manager	\$77K
Metallurgist	\$89K
Mechanical Engineer	\$83K
Logistics Manager	\$74K
Supply Chain analyst/engineer	\$84K



ACADEMICS

ILLINOIS TECH

Academic Calendar

SPRING 2022 SEMESTER

Begins January 10, 2022

FALL 2022 SEMESTER

Begins August 22, 2022



Important Application Deadlines

FALL SEMESTER

Application: April 15

Financial Support: May 31

Intent to Enroll: July 1

Deposit: Waived

SPRING SEMESTER

Application: October 15

Financial Support: November 1

Intent to Enroll: December 1

Deposit: Waived

DIFFERENCE BETWEEN MSCS AND MASTER OF COMPUTER SCIENCE – www.iit.edu/computer-science

Difference between the Master of Science in Computer Science and the Master of Computer Science

<https://www.iit.edu/academics/programs/computer-science-ms>

Master of Computer Science with Specializations:

<https://www.iit.edu/academics/programs/computer-science-mas>

Specializations include:

Business

Finance

Computational Intelligence

Data Analytics

Database Systems

Cloud Computing

Information Security & Assurance

Networking & Communication

Software Engineering

PRE-REQUISITE REQUIREMENTS

PROGRAMS OFFERED BY THE DEPARTMENT OF COMPUTER SCIENCE

.....

For any Master degree applicant, the Computer Science department requires proof of successful completion (6.5 out of 10) of the following pre-requisites:

- CS 201 – Accelerated Introduction to Computer Science (4 US Credits)
- CS 401 – Introduction to Advanced Studies I (3 US Credits)
- CS 402 – Introduction to Advanced Studies II (3 US credits)

For the MSCS, MCS and Master of AI programs: Successful completion (6.5 out of 10) is necessary for the following courses:

CS 330 Discrete Structures: CS 331 – Data Structures & Algorithms: CS 350 – Computer Org. & Assembly Lang Programming: CS 351 – Systems Programming and Calculus

Additionally, knowledge of a high-level programming course such as C or Java may be substituted for C++

<http://bulletin.iit.edu/undergraduate/courses/cs/>

<https://science.iit.edu/computer-science/programs/graduate/graduate-program-resources/prerequisite-undergraduate-coursework>

During the application process, the courses passed and corresponding to CS 201, 401 and 402 may be indicated separately and uploaded with the transcript

For any **Master degree applicant to the Electrical & Computer Engineering department** proof of successful completion of the following courses are required:

- Probability & Statistics – Math 474 (3 US credits)
- Signals & Systems - ECE 308 (3 US credits)

<http://bulletin.iit.edu/undergraduate/courses/ece/>

<http://bulletin.iit.edu/undergraduate/colleges/computing/applied-mathematics/#coursestext>

STUDENTS INTERESTED IN AEROSPACE ENGINEERING COURSES

IF STUDENTS ARE INTERESTED IN AEROSPACE ENGINEERING BUT DO NOT HAVE THE COURSE BACKGROUND, COURSES RECOMMENDED TO TAKE EITHER AT UPM OR AT IIT:

MMAE 410 (Aircraft Flight Mechanics)- prerequisites are a course on control and a course on aerodynamics

MMAE 411 (Spacecraft Dynamics)-prerequisites are a course on control, a course on dynamics and a course on differential equations

MMAE 412 (Spacecraft Design I) -prerequisite is 411

MMAE 414 (Aircraft Design I) -prerequisites are a course on advanced mechanics, a course on aerodynamics, a course on aerospace propulsion, and MMAE 410

If just interested in M.Eng in MAE – not necessary to take the above courses – have different options

MASTER DEGREE PROGRAMS OFFERED BY THE STUART SCHOOL OF BUSINESS – www.iit.edu/stuart

M.S. Finance
M.S. Environmental Management & Sustainability
M.S. Management Science
M.S. Marketing Analytics
M.A.S. Technological Entrepreneurship
M.P.P.A. – Master of Public Policy & Administration

- Eligible for 3-course transfer credit for SSB programs
- Eligible for a 9-credit hour scholarship for SSB (only one scholarship will apply) *

*

If choosing one of the SSB programs will only be eligible for 9 ch scholarship. If choosing a program in Engineering/Technology will only be eligible for 12 credits scholarship. One CANNOT apply both scholarships for a program.

DOUBLE DEGREE
2-yr Master – 2nd year at IIT

ILLINOIS TECH

PROCEDURE FOR THE DOUBLE DEGREE PROGRAM FOR THE 2-YEAR MASTER PROGRAM

Pre-selected by UPM

Can apply to Illinois Tech **only if pre-selected by UPM**
Complete 2nd year of the 2-year Master at IIT

TOEFL min. 90 ibt **OR** IELTS min. 6.5 **OR** Duolingo 110+ **required**

GRE general **waived** for Fall 2022 applicants

<https://www.iit.edu/admissions-aid/graduate-admission/gre-gmat-and-test-scores> - "GRE and GMAT Waiver: We understand that many GRE and GMAT testing facilities are closed due to the coronavirus. As a result, Illinois Tech has changed our test requirements for the spring and fall 2022 semesters. We are no longer requiring students to submit GRE or GMAT scores for all master's programs except for the Master of Science in Management Science."

Application deadlines:

Fall semester: April 15

Spring semester: October 15

Final decision made by Illinois Tech

1st/Year

UPM

2nd/Year

Illinois Tech

IIT Master's degree

UPM's Master's degree

1+1 Master
(1 yr Master at UPM + 1 yr
Master at IIT)

ILLINOIS TECH

1+1 PROGRAM – MASTER’S LEVEL

Applicable to students pursuing a **1-year Master at UPM**

Complete only the required courses at the Master’s level at UPM

Complete the **required UPM Trabajo fin de Master at Illinois Tech instead**

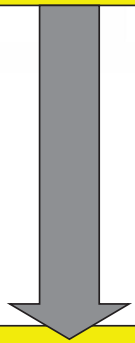
At Illinois Tech will complete a different Master (1 year in length) which will include the Trabajo Fin de Master

UPM will validate the TFM only

Receive UPM degree after validation of the TFM and the Illinois Tech Master’s degree

1st/Year

UPM-1 yr Master



UPM Master's degree
Upon completion of TFM at Illinois Tech

2nd/Year

Illinois Tech



IIT Master's degree with TFM

1+1 PROGRAM – MASTER’S LEVEL

Pre-selected by UPM

Can apply to Illinois Tech **only if pre-selected by UPM & on the 1-year Master degree program at UPM**

Completion of the courses for the Master’s at UPM: Not Trabajo fin de Master

TOEFL min. 90 ibt **OR** IELTS min. 6.5 **OR** Duolingo 110+ **required**

GRE general **waived** for Fall 2022 applicants

Application deadlines:

Fall semester: April 15

Spring semester: October 15

Final decision made by Illinois Tech

COMPARISON BETWEEN THE TWO PROGRAMS

1-Year Master completed at UPM – **add** another year at Illinois Tech – **no course transfer credit** – can choose **any type of Master**

2-year Master at UPM – complete the 2nd year at Illinois Tech – eligible for 2-course transfer credit – must choose the Master that UPM approves of – **no additional year**

Both 2-year Master and 1-year Master can complete the Trabajo Fin de Master at Illinois Tech which can be included in the Illinois Tech 1-year Master's degree

Both types – eligible to work in the U.S. under the F1 student visa

Both types will receive two degrees (Illinois Tech and UPM)

Both types may be eligible for a partial merit scholarship of 9 credits for the year

ONLY FOR ETSIAAB-UPM
Slides 54-57 regarding
departments of interest

ILLINOIS TECH

Department of Food Safety and Nutrition

Master of Food Process Engineering 32 c.h.

Master of Food Safety & Technology 32 c.h.

Master of Food Safety & Technology with Specialization in Business (32 c.h.)

Master of Food Safety & Technology with Specialization in Industrial Management (32 c.h.)

9 credits of Business courses for Specialization in Business

Department of Biology

M.S. in Biology (32 – 34 ch) NON-THESIS option but TFM (research project) possible

M.S. in Biology with Specializations (non-thesis option, but TFM (research project) possible:

- Applied Life Science
- Cell & Molecular Biology
- Computational Biology
- Microbiology

M.S. in Molecular Biochemistry & Biophysics (non-thesis option but TFM/ research project possible)

Research areas in Biology

Small-angle X-ray scattering for study of muscle contraction and regulation, and structure of proteins and their complexes in solution

Cell and cancer biology

X-ray crystallography – development of software tools to help researchers determine and analyze the three-dimensional structures of large biomolecules

Computational genomics

Population genetics and evolution

Pathogenic bacteria

Biomechanical trauma

Genetic therapy

Tuition and Fees – August 2021-May 2022

Cost per Credit Hour: \$1,614 (includes IIT Europe partner school students seeking any 1-year program offered by the Stuart School of Business (NOT MBA)

Mandatory & Other fees additional

PER SEMESTER

Activity Fee »	
Full time	\$125.00
Part time	\$40.00/course
Student Service Fee »	
Full time	\$530.00
Part time	\$190.00
UPass Fee »	\$155.00
Course Fees	View Rates

For additional info, visit <https://web.iit.edu/student-accounting/tuition-fees/future-tuition/mies-campus-graduate>

Tuition cost – example – GRADUATE LEVEL

Cost per Credit Hour: \$1,614 (August 2021-May 2022)

Example if admitted to Illinois Tech:

32-credit hour Master		\$51,648
-----------------------	--	----------

a)IIT Partner Alliance scholarship 12 credits	=	-	\$19,368
---	---	---	----------

b) Eligibility for a 2-course (6 c.h.) transfer credit	=	-	\$9,684
--	---	---	---------

(if approved)

Tuition total applying a) & b)	=	\$22,596
--------------------------------	---	-----------------

N.B. - Cost may increase for August 2022-May 2023. Check the web link below for the new cost in Feb/March 2022.

For additional info, visit <https://web.iit.edu/student-accounting/tuition-fees/future-tuition/mies-campus-graduate>

Tuition cost – example (Stuart School of Business)

Cost per Credit Hour: \$1,614 (August 2021-May 2022) **ONLY APPLIES** to Europe partner school students pursuing 1-year Master level programs offered by the Stuart School of Business

Example if admitted to Illinois Tech:

33-credit hour Master			\$53,262
a) IIT Stuart School of Business scholarship 9 credits =	-	\$14,526	
(or SSB scholarship)			
b) Eligibility for a 3-course (9 c.h.) transfer credit =	-	\$14,526	
(if approved for Engineering & Technology)			
Tuition total applying a) & b)	=	\$24,210 for Stuart School of Business only	

N.B. - Cost may increase for August 2021-May 2022. Check the web link below for the new cost in Feb/March 2022.

For additional info, visit <https://web.iit.edu/student-accounting/tuition-fees/future-tuition/mies-campus-graduate>

Mandatory & Other Fees – Graduate Level – Engineering/Technology/Science

August 2021-May 2022

Activity Fee	\$ 250
Student Service	\$1,060
Health insurance	\$1,896
New Student	\$ 300
U-Pass	\$ 310
Graduation App	\$ 225
Total	\$4,041

N.B.1: does not include any lab fees that may apply for certain courses

N.B. 2: New cost for August 2022-May 2023 will be posted in Feb/March 2022 on the Student accounting link below:

<https://web.iit.edu/student-accounting/tuition-fees/future-tuition/main-campus-graduate>

Mandatory & Other Fees – Graduate Level – Stuart School of Business

August 2021-May 2022

Activity Fee	\$ 250
Student Service	\$1,060
Health insurance	\$1,687
New Student	\$ 250
U-Pass	\$ 310
Graduation App	\$ 225
Total	\$3,782

N.B.1: does not include any lab fees that may apply for certain courses.

N.B. 2: New cost for August 2022-May 2023 will be posted in Feb/March 2022 on the Student accounting link below:
<https://web.iit.edu/student-accounting/tuition-fees/future-tuition/stuart-school-business>

Past examples of course credit transfer for UPM

ETSII-UPM: INTM 502, 404, 477, 531,
MMAE 484, 502, 525, 574, or ECE 531

ETSIT-UPM: CS 470, 532, 542, ECE 407, 409, 421, 436, 437, 483, 514, 570 or 576

ETSIA-UPM: MMAE 502 & MMAE 510

ETSICCP-UPM: CAE 562, 564

ETSIAAB-UPM: FDSN 521, FDSN 531

- N.B. a) Should choose from among the elective courses in the Master's degree program of choice at Illinois Tech
b) Can only choose 2 course equivalents i.e. 6 US credits or 12 ECTS (**6 ECTS minimum for a 3 c.h (U.S.) course**)
c) Courses must be **Master level** courses
d) Courses must be **compatible in content and number of hours**
e) Courses successfully passed (**6.5 out of 10**) for each 3ch (U.S.) course equivalent

OUTCOME FOR THE 1-YEAR MASTER DEGREE PROGRAM

Will add an extra year at Illinois Tech

Complete the 30, 32 or 33 credit hour Master (no course transfer credit)

Complete the Illinois Tech Master's in 1 year (12 months)

Includes Trabajo fin de Master-TFM (research project)

2 degrees
(IIT Master's and equivalent Master's from UPV)

OUTCOME FOR THE DOUBLE DEGREE PROGRAM

2nd year of Master at Illinois Tech

Complete the Illinois Tech Master's in 1 year (12 months)

Includes Trabajo fin de Master-TFM (research project)

2 degrees in 1 year
(IIT Master's and equivalent Master's from UPM)

Master's Degree Degree - Page 2

Overview

Salaries

Related Degrees

How should I pay?

Price a Job

What am I worth?

Find market worth

Job Title

Range

Average

Data Analyst

\$49k - \$93k

\$67,805

High School Teacher

\$35k - \$81k

\$52,678

Marketing Manager

\$48k - \$106k

\$71,505

Data Engineer

\$71k - \$138k

\$99,000

Marketing Director

\$64k - \$168k

\$105,837

Senior Product Manager

\$105k - \$172k

\$140,893

Human Resources (HR) Business Partner

\$55k - \$101k

\$74,833

By clicking "Accept All Cookies", you agree to the storing of cookies on your device to enhance site navigation, analyze site usage, and assist in our marketing efforts.

[Cookies Settings](#)[Accept All Cookies](#)

Type here to search

ENG 12:55 PM
FR 10/12/2021

UPON GRADUATION - POSSIBILITIES

- ❖ Eligibility to work in the U.S. under F1 OPT for 12 months
- ❖ Possible extension if STEM-related to 24 months in addition under OPT
- ❖ Median annual salary in the U.S. : 71,000 USD according to specialization
 - ❖ Average annual salary in the U.S.: 65,000 USD
 - ❖ PhD. (Doctorate) in the U.S. or elsewhere
 - ❖ Work in Europe or elsewhere

CERTIFICATE PROGRAMS

(Non-Degree)

ILLINOIS TECH

Non-Degree online Certificate programs

LEVEL - Master

FORM OF INSTRUCTION DELIVERY - Online

STUDENT TYPE – Current Master degree students and part-time students

BENEFITS:

- 50% discount that may apply to a future Master's degree program at Illinois Tech (double degree)
- Professional development –enhance skill set
- Expérience with U.S. teaching/pedagogy
- Illinois Tech certificate upon program completion

Examples of a few Certificate programs

Cyber Security Management
Data Management & Analytics
Software Development
Supply Chain Management
Advanced Electronics
Computer Engineering
Cybersecurity Engineering
Power Electronics
Computer Integrated Design & Manufacturing
Process Operations Management
Product Quality & Reliability Assurance

LINKS:

bulletin.iit.edu/graduate/colleges/engineering/#degreeprogramstext

bulletin.iit.edu/graduate/colleges/science/computer-science/#certificatestext

COST FOR THE CERTIFICATE PROGRAM

Offered to IIT Europe partner school students at 50% discount

May take the entire certificate program

OR

May take one or two courses at 50% discount per course from the certificate program that MAY apply to a specific Master's degree program at Illinois Tech

Example:

Certificate program of 9 credits = \$14,526 (August 2021-May 2022 cost per credit = \$1614

50% discount = **\$7,263**

Or

1 course from the certificate program (3 credits = \$4,842) @ 50% discount = **\$2,421**

APPLICATION PROCEDURE FOR THE ONLINE CERTIFICATE PROGRAM

- Must be pre-selected by the home institution
- Names and email addresses of pre-selected students sent to europa@iit.edu
- Illinois Tech will inform students about the application process
- Application deadlines: April 15 for Fall and October 15 for Spring
- Pre-requisites must be completed – discounted cost not applicable
- May take one or two courses per semester online
- Maximum number of courses in the certificate program not to exceed 15 credits (including pre-requisites)
- Discounted cost applicable for courses offered in the certificate program (not pre-requisites)

RESEARCH AT ILLINOIS TECH

ILLINOIS TECH

Selection by UPM

Submit an application file to Illinois Tech

Deadline: 15 October

Research for 6 months– Registration fee of 3 credits (\$4,842 –
August 2020-May 2021 –Engineering/Technology)

No registration fee for a summer research project of 3 months
(mid-May- mid-August)

*

- Do NOT contact the professors directly
- Each professor working at a research center/institute is affiliated to a department at Illinois Tech
- When applying for research, documents are issued by the department NOT the research center

Research - GRADUATE PROCEDURE

- Selected by school – name submitted to IIT Europe
- Send required docs (certified copy of transcripts in english only, 1 letter of recommendation, CV, copy of the name page of passport, certified letter of proof of intermediate level in English or official & valid TOEFL/IELTS score & a professional statement – identify three professors in one department at IIT, with whom you would like to work), proof of Bachelor's degree in English, VIA EMAIL to IIT Europe office
- IIT Europe will distribute the dossier to the 3 professors you identified, within 1 department at IIT Chicago
- MUST CHOOSE ONLY ONE DEPARTMENT AT IIT
- IF APPROVED BY THE PROFESSOR AT IIT, IIT Europe will inform you, after which you will send the Financial support form IN ORIGINAL BY POST, directly to the Department coordinator at IIT.

DO NOT SEND ANY DOCUMENTS TO THE GRADUATE ADMISSION OFFICE NOR TO THE PROFESSORS, AS THEY DO NOT PROCESS RESEARCH APPLICANTS

INSTITUTES & SOME RESEARCH CENTERS

ILLINOIS TECH

Institutes & Research Centers @Illinois Tech

- IIT Research Institute
- Institute for Food Safety & Health
- Pritzker Institute of Biomedical Science & Engineering
- Wanger Institute for Sustainable Energy Research (WISER)

RESEARCH CENTERS

Biophysics Collaborative Access Team (BioCAT)
Center for Accelerator & Particle Physics
Center for Complex Systems & Dynamics
Galvin Center for Electricity Innovation
Electric Power & Power Electronics Center
Center for Integrative Neuroscience & Neuroengineering Research
Center for the Molecular Study of Condensed Soft Matter
Center for Nutrition Research
Center for Processing Innovation
Medical Imaging Research Center
Center for Strategic Competitiveness
Center for the Study of Ethics in the Professions
Center for Synchrotron radiation Research & Instrumentation
Sustainable Transportation & Infrastructure Research Center.....

TESTIMONIALS

ILLINOIS TECH

Testimony from Mr. Javier Perez, of ETSII-UPM & IIT (MMAE 2008)

What is your current job position:

Strategy Manager

Was attending Illinois Tech worth it?: Absolutely!

The experience is worth the cost from a compensation point. Without Illinois Tech, I would have not been able to work in the USA.

Would you recommend this experience to others and why?:

The job market is a very competitive one. You need to be able to differentiate yourself. Studying in the USA gives you that differentiation.

Compensation history:

- First year \$50 + \$10K
- Third year \$65 + \$10K
- After F1 OPT, and then several H-1Bs, I got my green card last year, 9 years after I arrived in the USA

Profesionales Espanoles en Chicago

Profesionales Espanoles en Chicago (PEC)
Founded by UPM alum – Javier Perez

Javier Perez –javierptg@gmail.com
Lazaro Sanchez – Laza.sanchez@gmail.com

<https://www.pec-network.com/about-pec>

**UNDERGRADUATE – EXCHANGE
& VISITING**

ILLINOIS TECH

Undergraduate Non-degree Visiting

Pre-selected by UPM

Recommended application deadline April 15 for Fall
and November 1 for Spring

List of courses to be taken at IIT

Pursue courses for one semester or for one year
(minimum 12 c.h. per semester)

TOEFL 80 ibt or IELTS 6.5 or Duolingo 110+

Visa Type: J1 non-degree visiting & exchange

Undergraduate Application Procedure

IIT international undergraduate Application Form

<https://www.iit.edu/admissions-aid/undergraduate-admission/international-undergraduate-students/international-visiting-and-exchange-students>

- Exchange students – Home institution's study abroad adviser to nominate you using the Illinois Tech study Abroad Nomination Form - Only applicable under the **Ge3 consortium (engineering only)**
- Apply online
- Submit official/certified copies of transcripts (university level) in English & the native Language
- Architecture students must submit a digital portfolio (8.5 x 11 inches page size)
- Official copy of English Proficiency – TOEFL or IELTS or Duolingo
- A letter of recommendation from a professor
- Copy of the name page of passport
- Financial documents to show proof of funds available (may submit once a decision has been made)

Cost for 1 Exchange student from UPM via Ge3 consortium

- ❖ No tuition fee to IIT
- ❖ UPM Exchange student will pay the Mandatory and Other fees at IIT
- ❖ UPM Exchange student will be responsible for his/her living and other expenses
- ❖ Only applies at the Undergraduate level under GE3 program (limited to Engineering)
- ❖ Dependent on number of exchange spots available

UNDERGRADUATE – VISITING

ILLINOIS TECH

Non-degree Visiting students

(August 2021-May 2022)

	<u>1 year</u>	or	<u>1 semester</u>
Tuition (courses)	\$48,670		\$24,335
Illinois Tech Scholarship	-\$20,000		- \$10,000
Cost due to IIT	\$28,670	OR	\$14,335

ADDITIONAL FEES:

Mandatory & Other fees (<https://web.iit.edu/student-accounting/tuition-fees/mandatory-and-other-fees>)
<https://web.iit.edu/student-accounting/tuition-fees/current-tuition/main-campus-undergraduate>

Room & Board on campus

Room only scholarship available of \$2,500 per semester for admitted Exchange and Visiting students who choose to live in Illinois Tech on-campus residence halls.

N.B.: New cost for August 2022-May 2023 will be posted in Feb/March 2021 on the Student accounting link below:
<https://web.iit.edu/student-accounting/tuition-fees/future-tuition/main-campus-undergraduate>

Mandatory & Other Fees – Undergraduate Level

August 2021-May 2022

	1 year	1 semester
Activity Fee	\$ 250	\$ 125
Student Service	\$1,060	\$ 530
Health insurance	\$1,896	\$ ~948
New Student	\$ 350	\$ 350
U-Pass	\$ 310	\$ 155
Total	\$3,866	\$2,108

N.B.: New cost for August 2022-May 2023 will be posted in Feb/March 2022 on the Student accounting link below:
<https://web.iit.edu/student-accounting/tuition-fees/future-tuition/main-campus-undergraduate>

Mailing of

Undergraduate documents:

Mail documents & updated transcripts to:

Office of Undergraduate Admissions

c/o Illinois Institute of Technology

101 Perlstein Hall

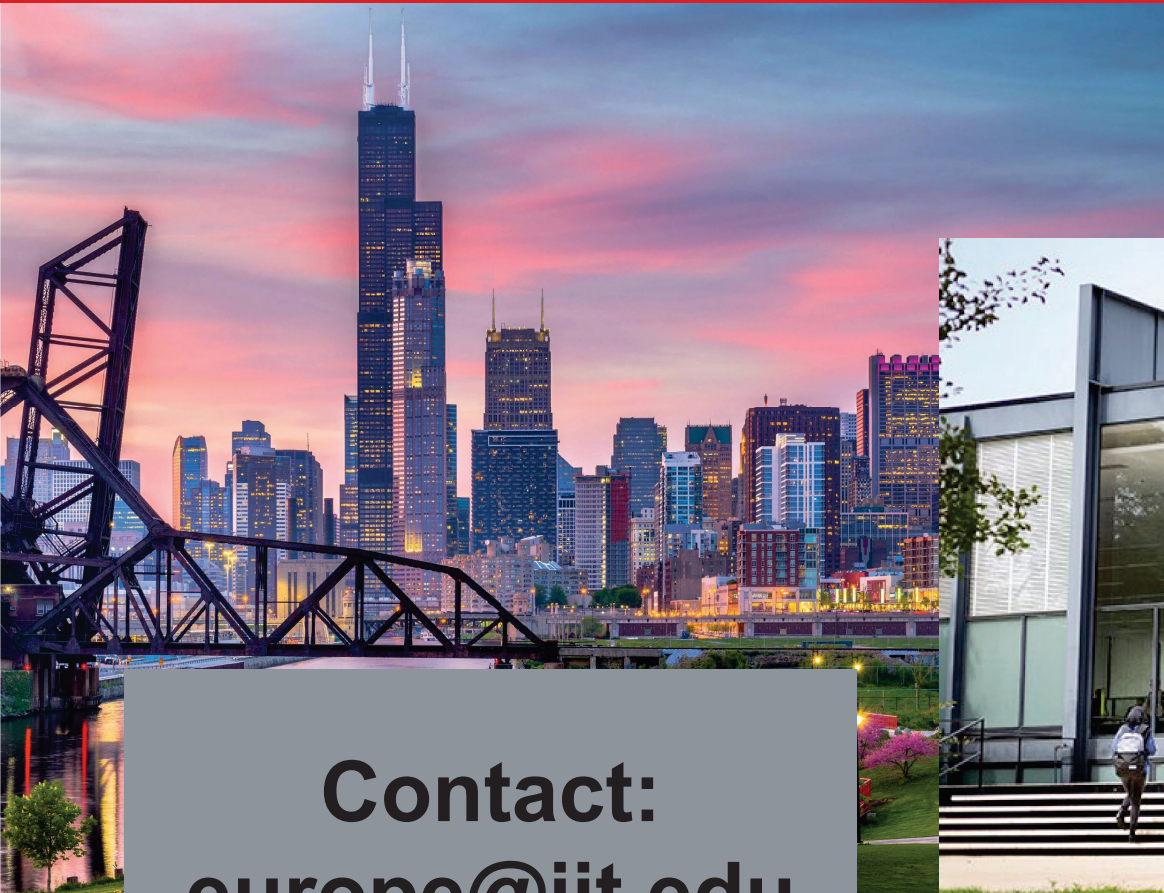
10 W 33rd Street

Chicago, IL 60616

USA

P: 312 567 3025

Are You Ready to Start Your Journey in Chicago at Illinois Tech?



Contact:
europe@iit.edu

